

## Art 6

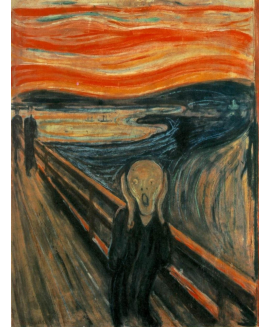
“Every artist was first an amateur” Ralph Waldo Emerson.

### Contact Info

Mrs. Anna Mann

Email: [amann@madisonschools.k12.va.us](mailto:amann@madisonschools.k12.va.us)

Phone: (540) 948 – 3783



**WELCOME  
TO ART!**

### COURSE DESCRIPTION

This class is an introductory class with a focus on the Elements of Art. Students will be introduced to art production, art history, art criticism and aesthetics. They will experiment with different media and processes from assigned projects. Students' final project will be a recreation of their favorite artists' work.

### CLASSROOM EXPECTATIONS

Show Your **BLUE!**

#### Be Respectful

(e.g. Allow others to learn, respect personal space, listen while others are speaking, follow directions)

#### Learn Everyday

(e.g. Participate in activities, engage in classroom discussions, try your best!)

#### Understand Responsibilities

(e.g. Be prepared, be on time, clean up after yourself)

#### Encourage Everyone

(e.g. Treat others with kindness, help others, include everyone in group work)

### GRADING

Homework/Classwork: 20%

Quizzes/Labs: 30%

Tests/Projects: 50%

## **CLASSROOM PROCEDURES**

**AIM** To do your best, to learn and to appreciate art with new eyes

**RESPECT** Yourself, your classmates, your environment, your ARTWORK

**FOLLOW** Class procedures, directions, and school policies

<b>Start of Class</b>	<b>Studio Time</b>	<b>End of class</b>
Be on Time Find your seat Read the board and follow instructions	Follow instructions Time Management Work Hard Ask questions	Clean up the last 5 minutes of class. Stay seated Take work home if needed.

Students are expected to come into class prepared to create! At the beginning of each class students will begin with a 10 minute warm up. We will use our bullet journal during this time. During INSTRUCTION students are expected to listen quietly and wait to ask questions at the end of the lesson. Transitioning into STUDIO time should be done swiftly and without classroom disruption. Students will use the remainder of the class to work on the current project. CLEAN UP will be conducted 10 minutes before the end of class. The class should look as good or better than when students entered. Once cleaning is complete, students should sit quietly in their seats until dismissal.

## **TURNING IN ASSIGNMENTS**

Assignments are expected to be turned in on the due date. Each assignment will have a reflection and a rubric that the students will fill in and view. The reflection counts as a quiz grade. Put your name on EVERYTHING. It is your responsibility to make up work that is lost or left out of place.

## **ABSENT**

If you are absent it is your responsibility to speak to the teacher about what you missed.

You will not receive extra class time to complete an assignment. You may make arrangements to come and work one day after school. Arrangements must be made with Mrs. Mann at least 1 day prior.

There will be time to finish projects at the end of the year during gallery (art show) prep.

## **MISSING WORK**

If you are missing work, you will be given an opportunity to make adjustments during gallery preparation days towards the end of the semester.

## **CLASSROOM LINKS**

- [VDOE :: Fine Arts Standards of Learning Resources](#)
- [Home | Scholastic ART](#)

## **CLASSROOM WISH LIST**

- Pencils
- Baby Wipes
- Dish Soap